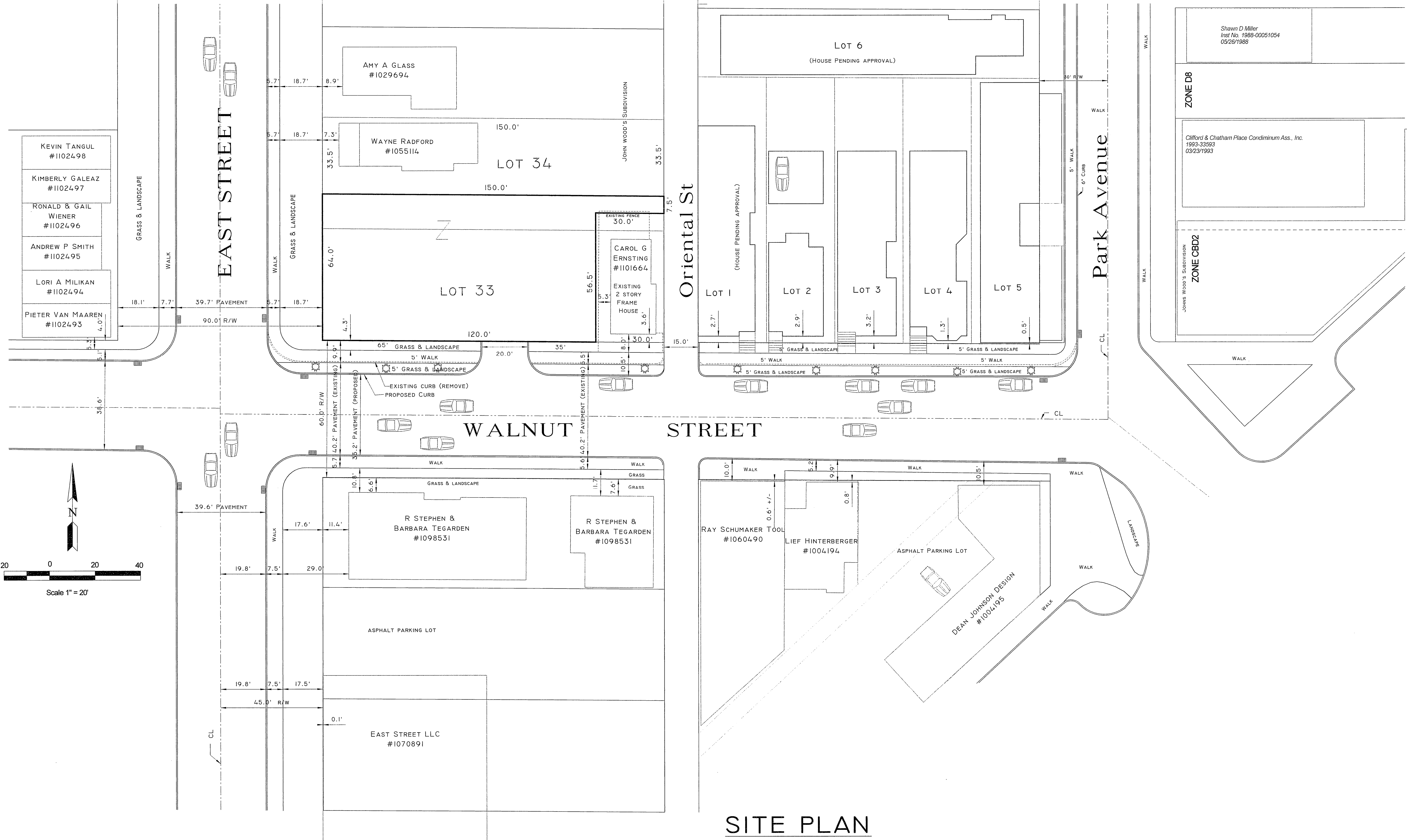


WALDORF Phase Two

WALDORF SUBDIVISION SECTION ONE

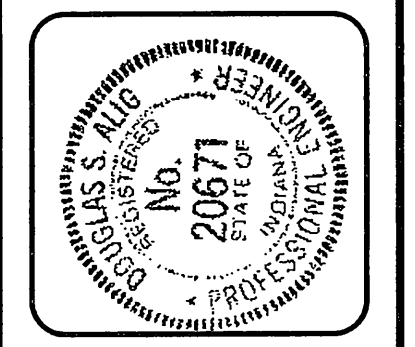


Date

Prepared For:
Carreau Design
 6528 Cornell Ave
 Indianapolis, In . 46220
Preliminary Site Plan

Waldorf Phase Two
 East & Walnut Street
 Indianapolis In

ALIG ENGINEERING, INC.
 8271 N WASHINGTON BLVD.
 INDIANAPOLIS, IN. 46240-2253
 317-254-5670



Date: September 26, 2005
 Scale: 1" = 20'
 Sheet No. **1**

SITE PLAN